
Adtemp™ 419 Digital Hypothermia Thermometer

Instructions
for Use



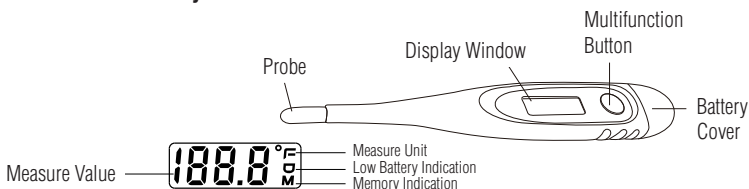
ADC[®]
AMERICAN DIAGNOSTIC CORPORATION

Thank you for choosing an ADC® Adtemp™ digital stick thermometer. Your new hypothermia thermometer is designed to provide accurate, extended-range body temperature measurements. Adtemp thermometers meet or exceed all relevant international performance standards.

Device Description and Intended Use

This device is intended to measure human body temperature in children and adults. It has a digital display and can be used in a professional or household environment.

Parts and Assembly



Symbol Definitions

The following symbols are associated with your thermometer.

Symbol	Definition
	Important warning/caution
	Not made with natural rubber latex
	Phthalate free
	Keep Dry
	Operating instructions
	Manufacturer's information
	Authorized European representative's information
	Meets essential requirements of European Medical Device Directive 93/42/EEC

Symbol	Definition
	Lot number
	Multifunction button
	Auto detection error
	Temperature is higher than measuring range
	Temperature is lower than measuring range
	Memory indication
	Low-battery indication

General Warnings

A warning statement in this manual identifies a condition or practice which, if not corrected or discontinued immediately, could lead to patient injury, illness, or death.

WARNING: This instrument is designed for oral, rectal, or axillary use only.

WARNING: High prolonged fever requires medical attention, especially for young children. Please contact your physician.

WARNING: Keep out of reach of unsupervised children. Components may be harmful if swallowed.

WARNING: Stop using the thermometer if it operates erratically or if the display malfunctions.

WARNING: Oral readings are usually 0.5°F to 1.0°F degree lower than rectal readings; axillary readings are generally 0.5°F to 1.0°F lower than oral readings.

WARNING: Avoid taking temperature for 30 minutes after physical exercise, bathing, dining, or drinking hot or cold beverages.

WARNING: Allow the thermometer to warm naturally to room temperature before using. Performance may be affected if operated or stored outside stated temperature and humidity ranges or if the patient's temperature is below the ambient (room) temperature.

WARNING: After using, clean the thermometer and place it into the case. Clean the unit by wiping it with a dry cloth and disinfect the probe with isopropyl (rubbing) alcohol. See cleaning instructions for additional details.

CAUTION: Keep thermometer away from direct sunlight, moisture, extreme temperatures, or dust.

CAUTION: Do not boil, bite, bend, drop, or disassemble the thermometer.

CAUTION: Do not open the unit except to replace the battery.

CAUTION: Do not use this device close to strong electromagnetic fields, such as mobile telephones.

CAUTION: Do not let thermometer come into contact with any thinner or chemical solvents.

CAUTION: Dispose of batteries in accordance with locally applicable regulations, not with domestic waste.

How to Use

1. Disinfect the probe with isopropyl (rubbing) alcohol before using.
2. Press and release the multifunction button. The display will read **188.8** confirming the unit is functioning properly, then will show **L°F** with **°F** flashing.
3. We recommend using probe covers with all digital stick thermometers. If using, place cover over tip of unit.
4. Place the probe in the appropriate position for your measurement site. (see **Ensuring Accurate Temperature Measurement** below).
5. Once the **°F** stops flashing the measurement will be displayed and an alarm signal will sound.
6. The unit will automatically turn off in about 3 minutes. To prolong battery life, press the multifunction button to turn off the device manually.

Special Features

Last-Temperature Memory Recall: With the thermometer off, press and hold the multifunction button for approximately 5 seconds. The display of 188.8 will change to show the last reading. This reading is displayed as long as the button is held down. When the button is released, the thermometer will be in “ready-to-measure” mode and the recalled temperature will be erased.

Switching Temperature Modes: Within 3 seconds of turning on the thermometer, the Celsius or Fahrenheit mode can be switched by pressing and holding the multifunction button for at least 2 seconds.

Ensuring Accurate Temperature Measurement

We recommend using probe covers (Figure 1) with all digital stick thermometers.

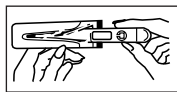


Figure 1

Oral Use: Place the probe well under the patient's tongue (Figure 2). Keep mouth closed while thermometer is reading.

Rectal Use: Lubricate the probe cover with a watersoluble jelly for easier insertion; do not use petroleum jelly, as it may cause an inaccurate reading. Insert the tip of the probe no more than 1/2 inch into the rectum.

STOP if you meet any resistance. The sensing unit is on the very tip of the probe and there is no need to insert the probe deep into the rectum.

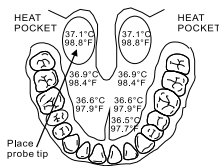


Figure 2

Axillary Use: Wipe armpit with a dry towel. Place the probe in the patient's armpit (Figure 3) and keep the patient's arm pressed firmly against the body. In order to achieve a better axillary reading, a minimum measuring time of 2-3 minutes is recommended regardless of the beep sound.

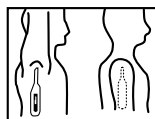
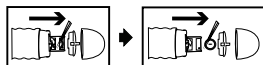


Figure 3

Battery Replacement

1. When the symbol "⏻" appears, the battery needs to be replaced.
2. Pull the battery cover off in the direction shown, remove rubber plunger, then turn over the device.
3. Use a pointed object such as a toothpick to pry loose the old battery. Avoid using any sharp metal object.
4. Place new 1.5V coin-type battery (LR41 or equivalent) in the chamber with the negative (-) side up and the positive (+) side down.
5. Replace and fasten the battery cover securely.



Troubleshooting

E_{rr}	Auto detection error. Please return to the distributor.
H	Temperature range is higher than measuring range. Please redo measurements.
L	Temperature range is lower than measuring range. Please redo measurements.
⏻	The device detects low battery, please change the battery. If the device is not functioning, first check the battery. Replace if necessary.

Cleaning and Disinfecting

- ⚠ Do not use corrosive detergent to clean the unit.**
- ⚠ Clean and disinfect the thermometer before and after each use.**

Cleaning Process

1. Pre-clean with cold water, washing several times.
2. Clean probe with a solution of 5-10% mild detergent for about 10-15 seconds.
3. Continuously clean with cold water to avoid any chemical residues remaining on the device.
4. Rinse the device with drinking water or distilled water to ensure the removal of all remnants of cleansing agent.

- If necessary, repeat step 2 through step 4 in order to make sure the device is clean.
- A final wipe down is necessary to avoid water stains.

Disinfecting Process

- Wipe probe with a cloth dipped in a disinfectant solution such as 70-75% isopropyl (rubbing) alcohol solution: contact time ≥ 10 minutes for disinfection.
- Rinse off disinfectant residue.

Drying Process

Allow device to air dry at room temperature.

Care and Storage

- Do NOT drop or crush; this device is not shock proof.
 - Do NOT dismantle or modify device other than changing batteries.
 - Do NOT store the device in an extreme environment with direct sunlight or high/low temperatures, or in a location with high humidity or severe dust.
-

Specifications

Measurement Range:	78.8~111.0°F	(26.0°C~43.9°C)
Resolution:	0.1°F (-17.72°C)	
	<96.4°F $\pm 0.5^\circ\text{F}$	(<35.8°C $\pm 0.3^\circ\text{C}$)
	96.4°F~98.0° $\pm 0.3^\circ\text{F}$	(35.8°C~36.7°C $\pm 0.2^\circ\text{C}$)
Accuracy:	98.0°F~102.0°F $\pm 0.2^\circ\text{F}$	(36.7°C~38.9°C $\pm 0.1^\circ\text{C}$)
	102.3°F~106.0°F $\pm 0.3^\circ\text{F}$	(39.1°C~41.1°C $\pm 0.2^\circ\text{C}$)
	>106.0°F $\pm 0.5^\circ\text{F}$	(>41.1°C $\pm 0.3^\circ\text{C}$)
Memory:	Last Reading	
Battery (Included):	LR41 Battery x 1pcs	
Dimensions:	129.4mm x 21.0mm x 11.9mm	
Battery Life:	More than 5000 measurements	
Weight:	Approx. 13g including battery	
Operating Conditions:	60.8~104.0°F, R.H. of 15~95% non-condensing	
Storage Conditions:	-4~120°F, R.H. of 15~95% non-condensing	
Standards:	Comply with ASTM-E1112	

Limited Warranty

ADC warrants its products against defects in materials and workmanship under normal household use and service as follows:

1. Warranty service extends to the original retail purchaser only and commences with the date of delivery.
2. Your Adtemp Hypothermia Thermometer is warranted for two years from date of purchase.

What Is Covered: Replacement of parts, and labor.

What Is Not Covered: Transportation charges to ADC. Batteries where supplied. Damages caused by abuse, misuse, accident, or negligence. Incidental, special, or consequential damages. Some states do not allow the exclusion or limitation of incidental, special, or consequential damages, so this limitation may not apply to you.

To Obtain Warranty Service: Send item(s) postage paid to ADC, Attn: Repair Dept., 55 Commerce Dr., Hauppauge, NY 11788. Please include your name and address, phone no., proof of purchase, and a brief note explaining the problem.


Implied Warranty: Any implied warranty shall be limited in duration to the terms of this warranty and in no case beyond the original selling price (except where prohibited by law). This warranty gives you specific legal rights and you may have other rights which vary from state to state.

For Australian Consumers: Our goods come with guarantees that cannot be excluded under the Australian Consumer Law. You are entitled to a replacement or refund for a major failure and compensation for any other reasonable foreseeable loss or damage. You are also entitled to have the goods repaired or replaced if the goods fail to be of acceptable quality and the failure does not amount to a major failure.




 **Dongguan Polygreen Technology Co., Ltd.**
Hsinchiao Industrial Zone, Huangjiang
Dongguan, Guandong, China

Distributed by: ADC®
55 Commerce Drive
Hauppauge, NY 11788

 **POLYGREEN GERMANY GmbH**
Ruhlsdorfer Straße 95, D-14532, Stahnsdorf,
Brandenburg, Germany

Inspected in the U.S.A.
Made in China
tel: 631-273-9600
toll free: 1-800-232-2670
fax: 631-273-9659
email: info@adctoday.com

www.adctoday.com

 Batteries and electronic devices must be disposed of in accordance with the locally applicable regulations, not with domestic waste.

 Read the instruction manual carefully before using this device, especially the safety instructions, and keep the instruction manual for future use.

 Type BF applied part

