

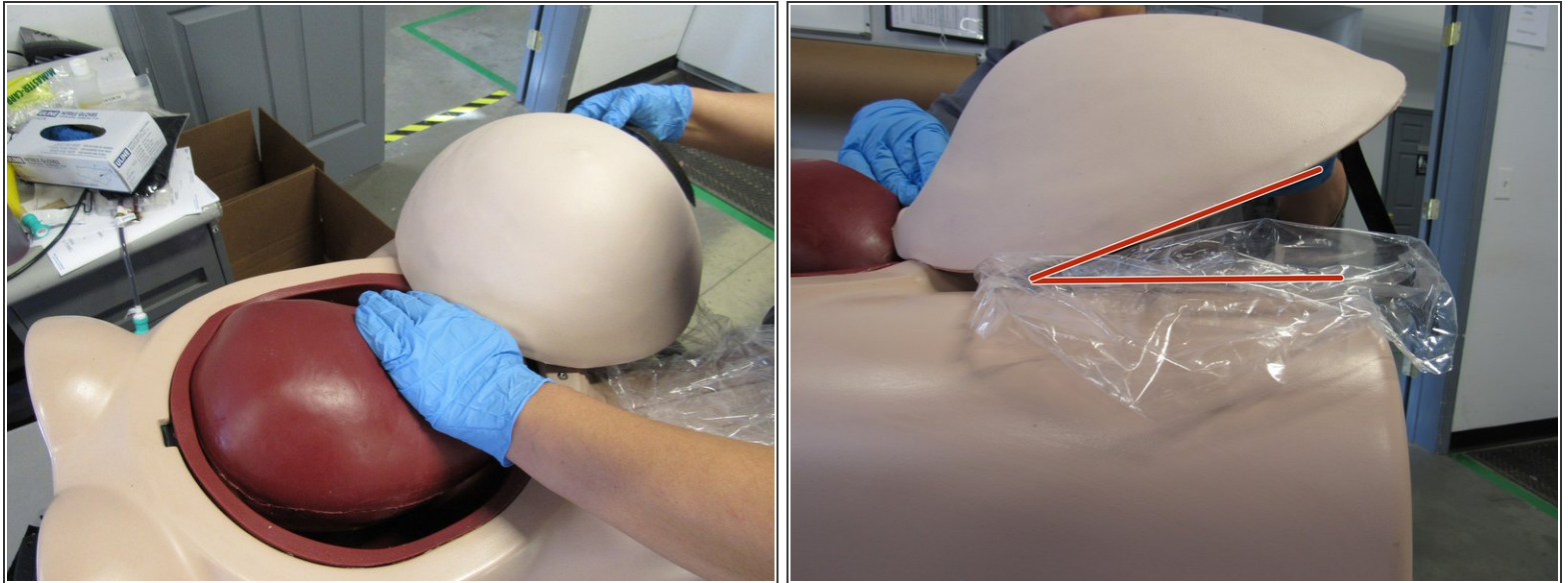


Belly Installation

Written By: Curtis Moorefield

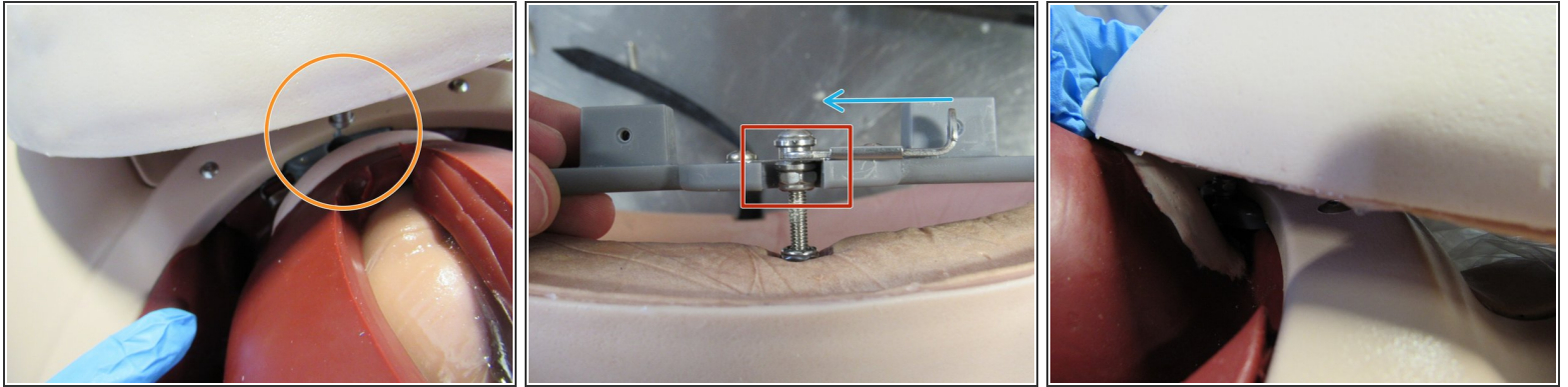


Step 1 — Belly Installation



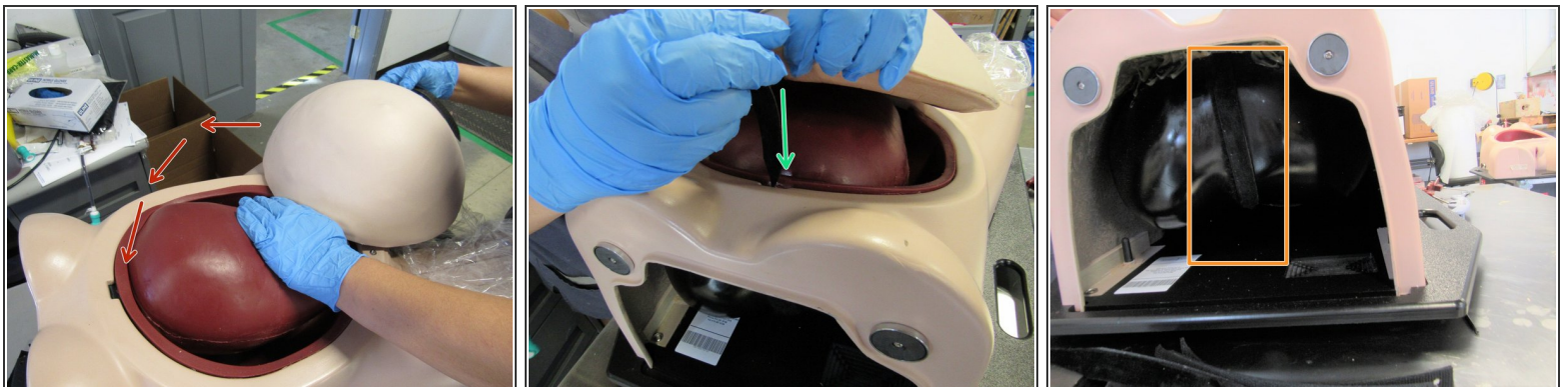
- Begin the install of the belly by positioning the belly with the Velcro strap over the legs
- Tilt the belly at an upward angle to allow the collar to slide into the clip
- Maintain the angle of the belly when locking into place

Step 2



- This is where the collar will be inserted before locking into place
- Slide the locking clip to secure the belly in place
- With the belly positioned, reach in and slide the locking clip
- ⓘ A "click" sound will be present when properly installed
- The nylon lock nut will be level with the uterus clip. This is what to look for before locking into place

Step 3



- With the locking clip engaged, press down on the uterus to allow the belly to rotate to its final resting position
- Insert the Velcro strap through the cut out in the back of the table top unit
- Pull the Velcro strap tight and apply to Velcro strip inside

